



## ProcessVue for AVEVA™

The ProcessVue Alarm Management Suite, designed and optimised for AVEVA industrial software

### Alarm Management in the Digital Age

For many years, effective Alarm Management software has enabled operators to quickly distinguish critical from routine alarms and to take timely corrective action while ensuring adherence to industry best practices and recommendations. But in the digital age Alarm Management offers much more than this.

A modern Alarm Management strategy applies a digital transformation mindset to the information being analysed. This 'without limits' approach offers Alarm Management a central role in a continuous improvement philosophy that drives efficiency and profitability. No longer just a necessary cost to operate safely and meet compliance needs, it is a route to optimisation, a productivity boon, a downtime killer and a window into operations data and continuous improvement potential.



**PROCESSVUE**  
Alarm Management Without Limits



**AVEVA**  
Technology  
Partner

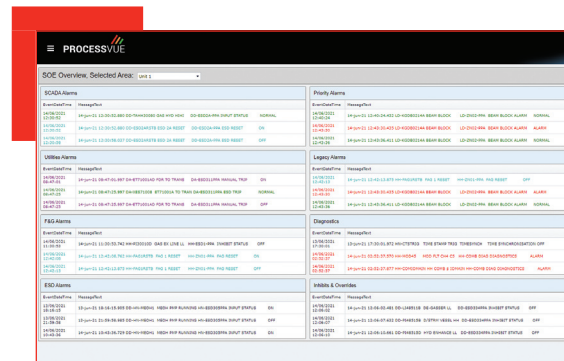
[processvue.com](https://processvue.com)

# ProcessVue Alarm Management Suite

The ProcessVue Alarm Management Software Suite is the culmination of over 30 years of experience and expertise in managing alarms. Designed to meet the requirements of a broad range of industries and based on globally recognised alarm management standards, it provides key personnel with clear, relevant, and prioritised information for operations, compliance, and business optimisation.

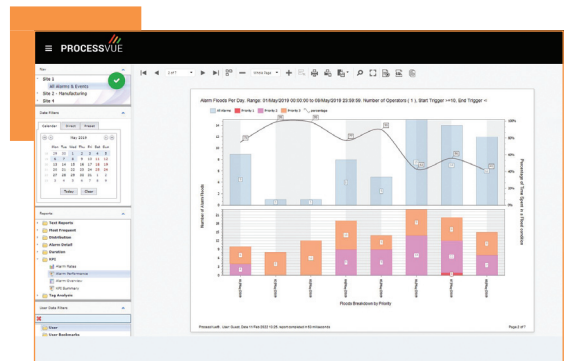
## PROCESSVUE SEQUENCE

ProcessVue Sequence is the foundation of the ProcessVue Alarm Management Suite. A flexible alarm historian collects information from multiple disparate systems and consolidates the data into an SQL database, providing a holistic view of all your alarm and event information. An easy to use, powerful web-based client, enables users to view, search and filter alarm and event messages.



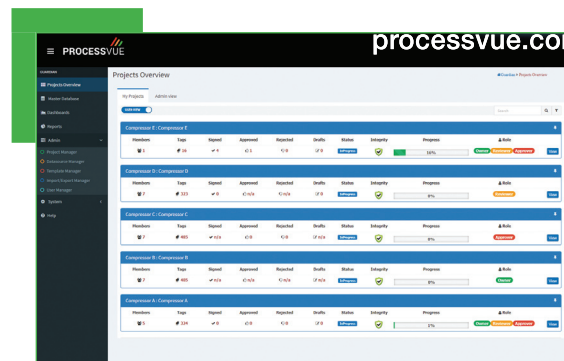
## PROCESSVUE ANALYSER

ProcessVue Analyser allows users to continuously benchmark their alarm systems to demonstrate compliance to standards and guidelines, including ISA18.2, API-1167, IEC /BS 62682 and EEMUA191. Automated reports and configurable dashboards assist in identifying and remediating against nuisance alarms, such as chattering, stale and fleeting, helping to increase operational efficiency.



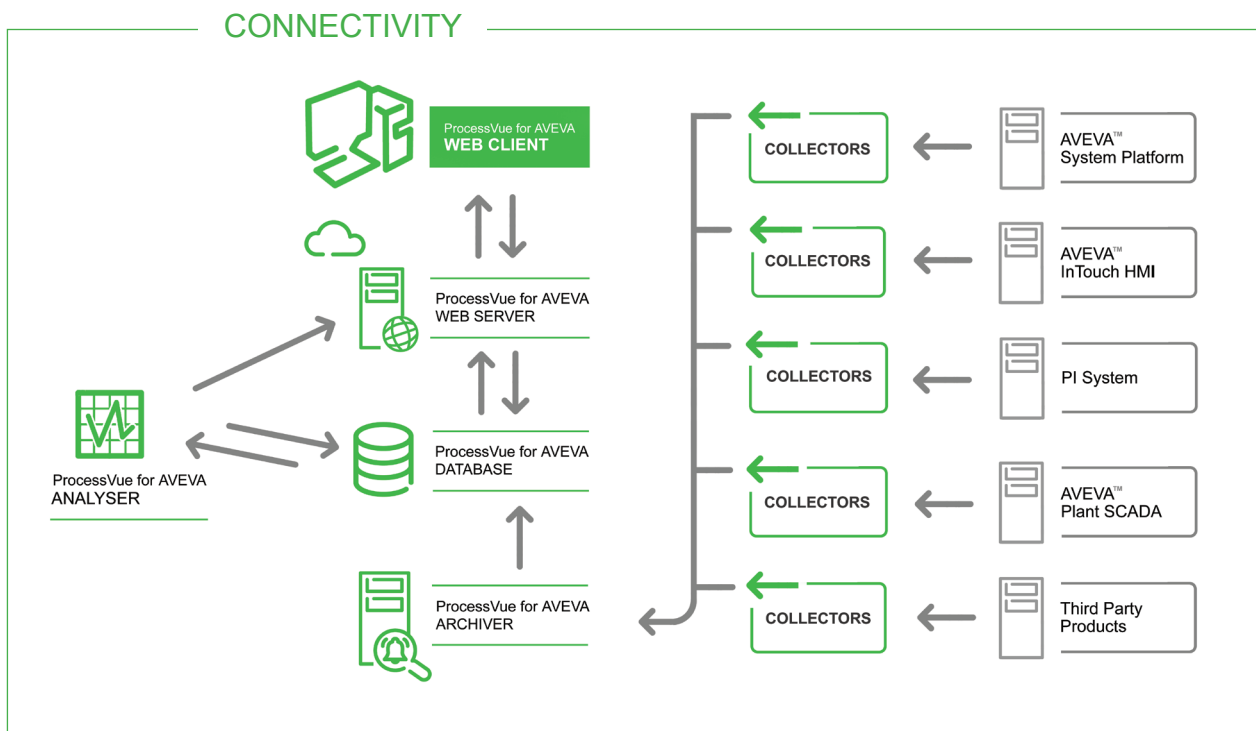
## PROCESSVUE GUARDIAN

ProcessVue Guardian integrates a Master Alarm Database and Management of Change functionality into a single application, facilitating alarm rationalisation and documentation activities in a fully collaborative work environment with productivity tools reducing project time and effort. An Alarm Response Manual is built and maintained to enable safe, compliant and efficient operations.



A proliferation in the number of alarms, driven by advances in software technology and the rapid multiplication of connected devices, means the challenge to operators has never been greater. But there is a solution. ProcessVue for AVEVA is an Alarm Management suite that is designed and optimised for AVEVA Industrial Software.

ProcessVue for AVEVA provides a means to not just live with the problem, but to solve it, and to drive efficiencies and profitability by applying a digital transformation mindset. Alarm data, like any data being used in an industrial facility, can and must be used to empower better decision making.



There is no complex engineering required to integrate ProcessVue for AVEVA, a wizard with 'out-of-the-box' configurations simplifies the process, reports can be generated within minutes. A suite of connectivity drivers facilitate seamless connectivity to AVEVA and third party products, providing a centralised system for all alarm and event data and a unified view across previously siloed systems.

ProcessVue for AVEVA provides users of AVEVA Industrial Software the means to manage their alarm systems in line with industry standards and guidelines, demonstrate compliance to regulatory bodies, reduce the number of alarms by highlighting problem areas, improve operator awareness, reduce operator stress and to drive efficiency and profitability.

# Protecting your Investment

ProcessVue is the ideal replacement for AVEVA Alarm Adviser, which became end-of-life in January 2020, with no further product development or updates to be released. AVEVA Alarm Adviser 2017 is under Mainstream Support Lifecycle until September 2022 and will then transition to Mature Status.

Alarm Adviser is an interactive web-based software tool, created to report on a selection of KPI's from alarm management standards and designed to help users gain an understanding of the problematic alarms faced by operators. ProcessVue extends the functionality of Alarm Adviser to support the user throughout the complete alarm management lifecycle.

Replacing AVEVA Alarm Adviser with ProcessVue is a simple procedure. There is no configuration or alarm history to migrate to a ProcessVue installation. This means ProcessVue can be installed and configured using the out-of-the-box wizard and producing reports within minutes.

Product features	Alarm Adviser	ProcessVue for AVEVA
Customisable dashboards	✓	✓
Frequency analysis	✓	✓
Fleeting alarm analysis	✓	✓
Stale alarm analysis	✓	✓
Alarm flood analysis	✗	✓
Operator response Analysis	✗	✓
Time in alarm analysis	✗	✓
Industry standards compliant	✗	✓
KPI summary reports	✗	✓
Automated reporting	✗	✓
Holistic real-time views	✗	✓
Incident investigation support	✗	✓
Notification of critical alarms	✗	✓

## Let's talk

Speak to one of our friendly, experienced team about the right solution for you

[processvue.com](https://processvue.com)

+44 (0)1246 733120  
[sales@processvue.com](mailto:sales@processvue.com)