

JULY 2024

Introduction to AVEVA™ Edge 2023 R2

Version 23.1

AVEVA

Agenda

Overview

Main Features and Competitive Advantage

Licensing

Key Takeaways

AVEVA EDGE

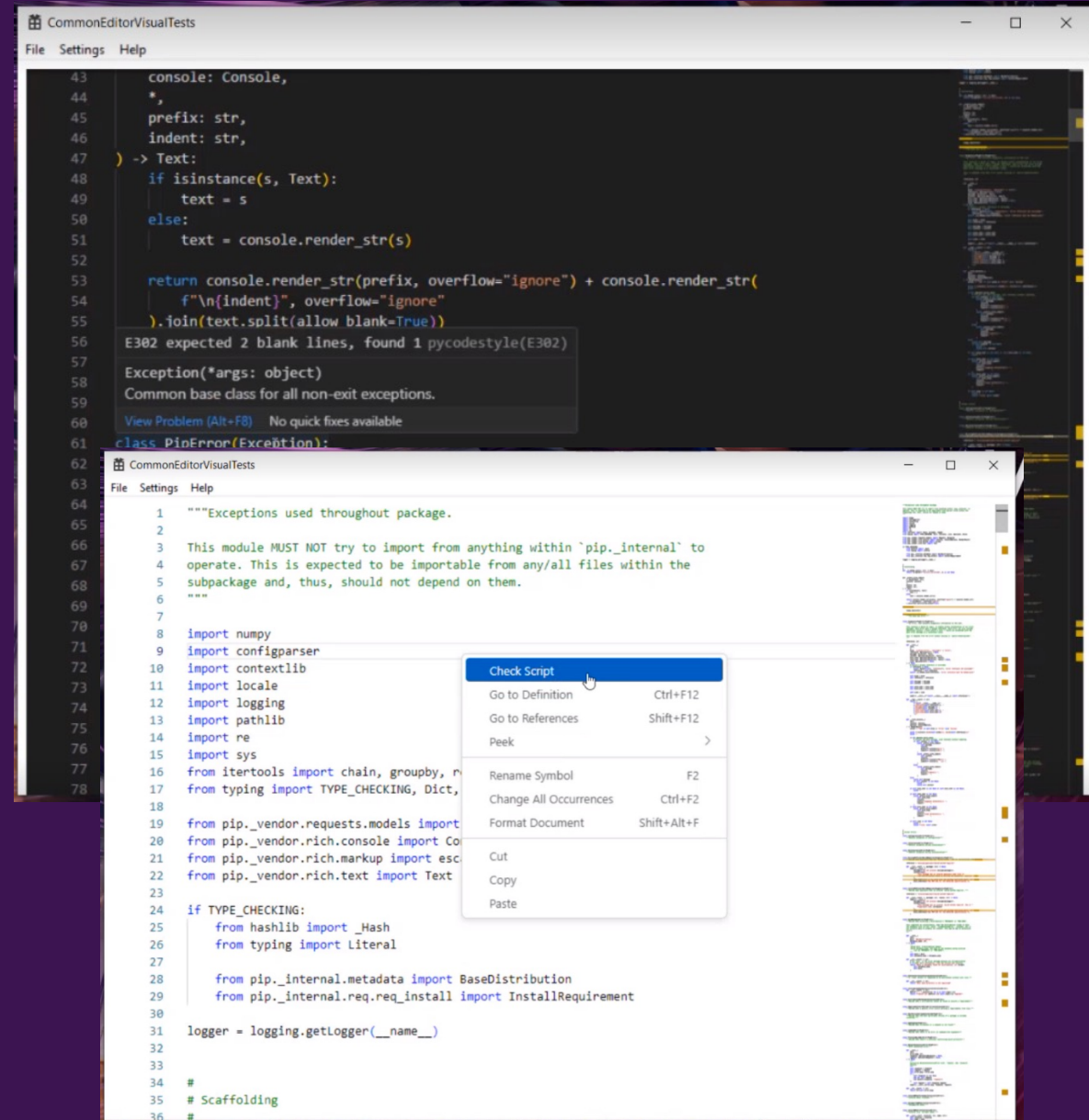
Overview

AVEVA

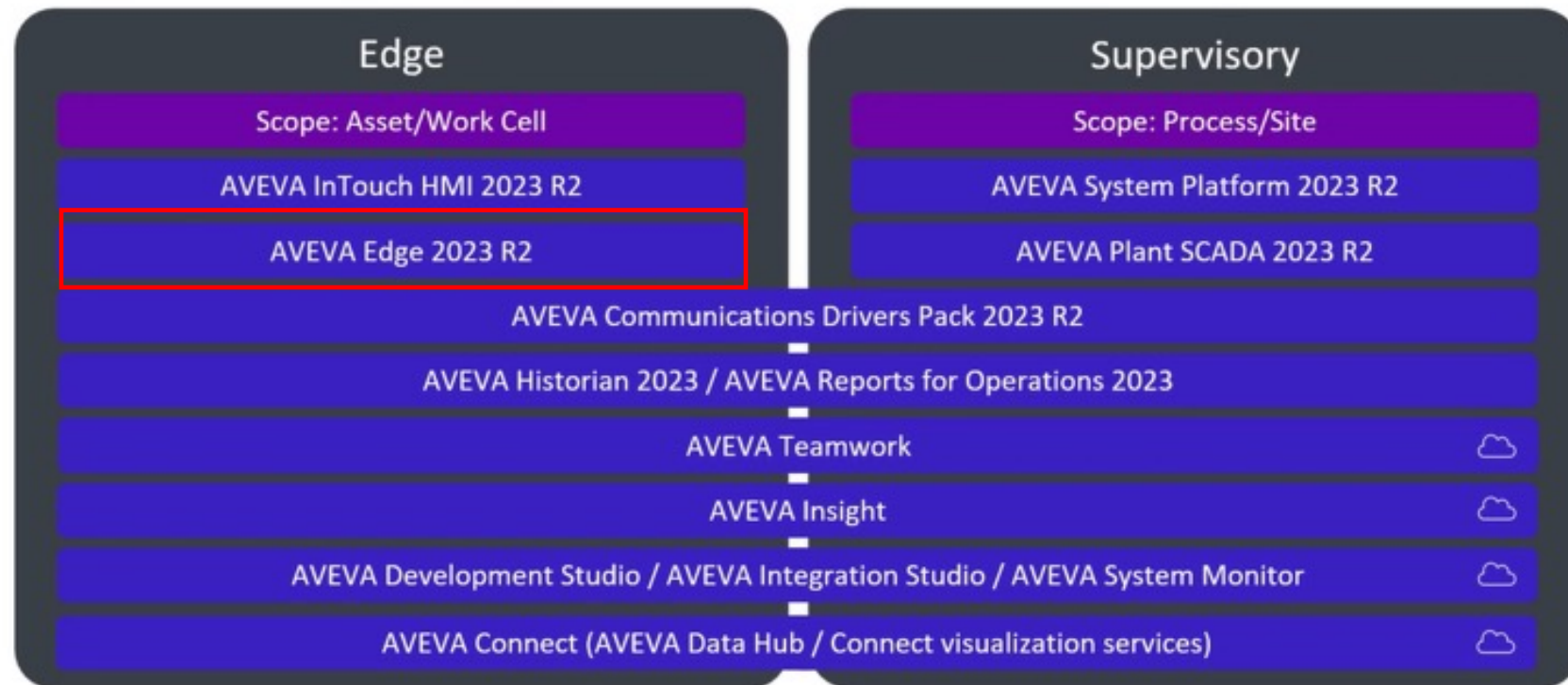
AVEVA Edge HMI 2023 R2

Embracing Cross Platform through IoT View

- Complete HMI Solution on Linux
 - Visualization
 - Tags
 - Scripts - PYTHON ADDED in 2023 R2
 - Alarms
- 16 Drivers Supported on Linux
- Minimal Footprint

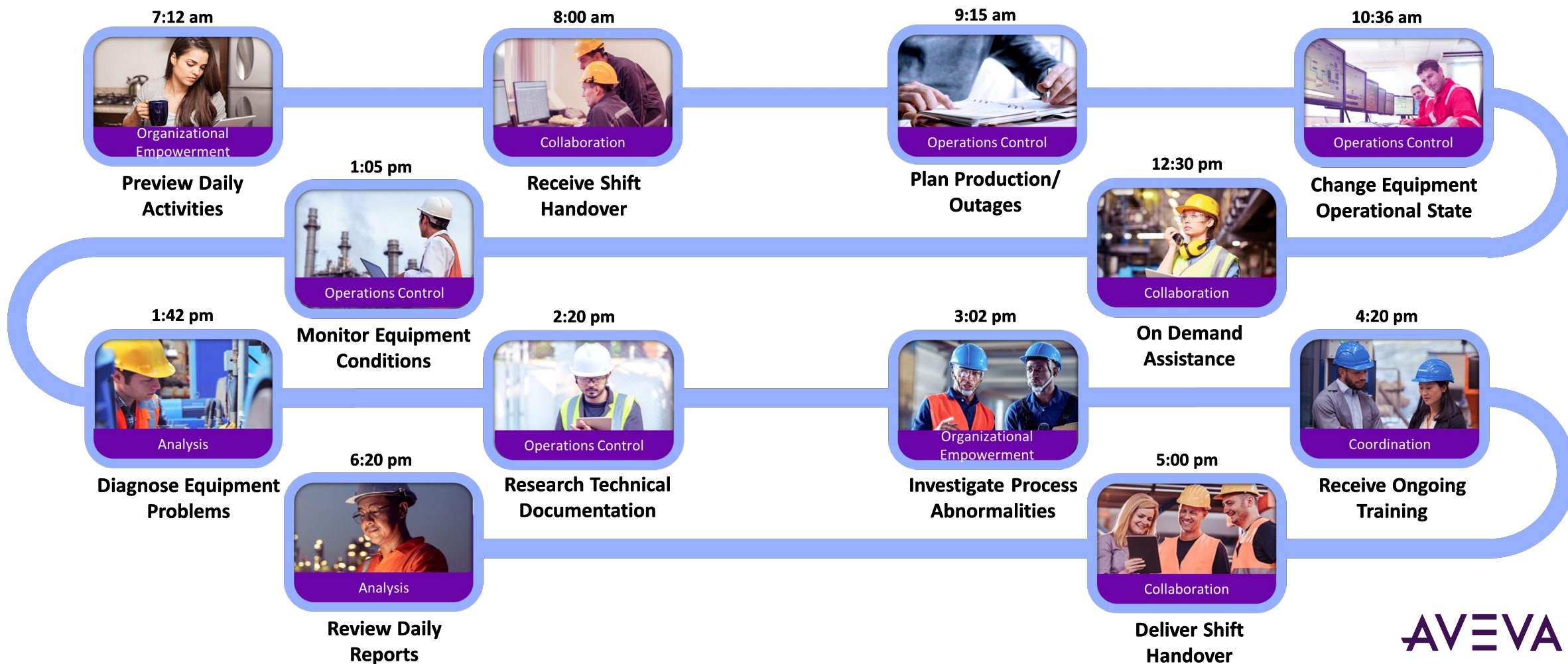


Operations Control 2023 R2



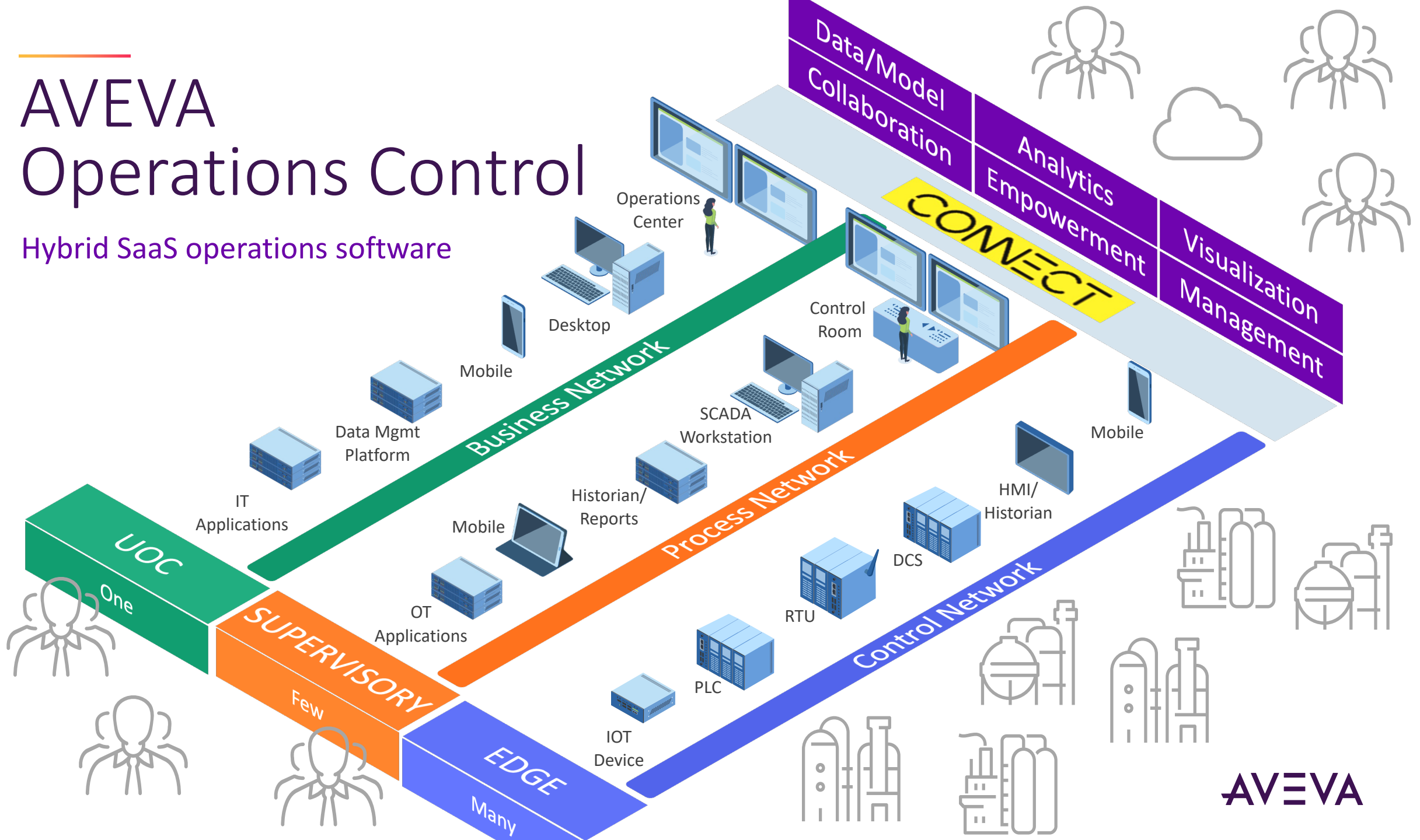
Operations – A Day in the Life

Enabled by AVEVA Operations Control – hybrid SaaS solution



AVEVA Operations Control

Hybrid SaaS operations software

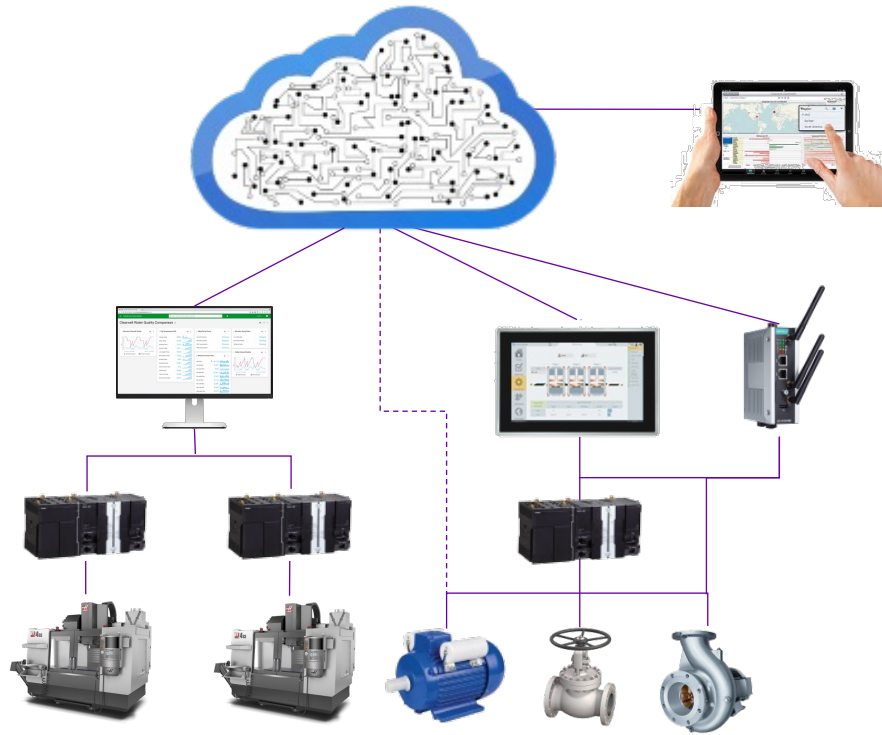


Industrial Internet of Things (IIoT) / Industry 4.0

AVEVA Edge as an IoT Gateway and/or HMI/SCADA node

C
L
O
U
D

P
r
e
m
i
s
e
s



Cloud Analytics and Mobile Access



analytics, consolidation, artificial intelligence (AI), machine learning (ML), remote management/deployment, remote notifications and monitoring

Edge devices



data acquisition, data manipulation (aggregations, filtering, contextualization, normalization), link with the cloud, local maintenance, local operation

Instrumentation and Controllers



operational real-time control, raw data measurements

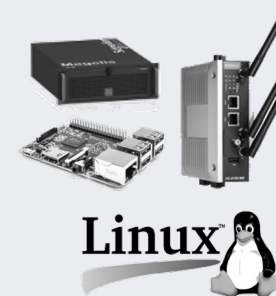
Main Benefits

 Productivity

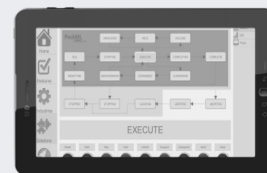
 Reliability

 Security


Portability




Mobility




Interoperability

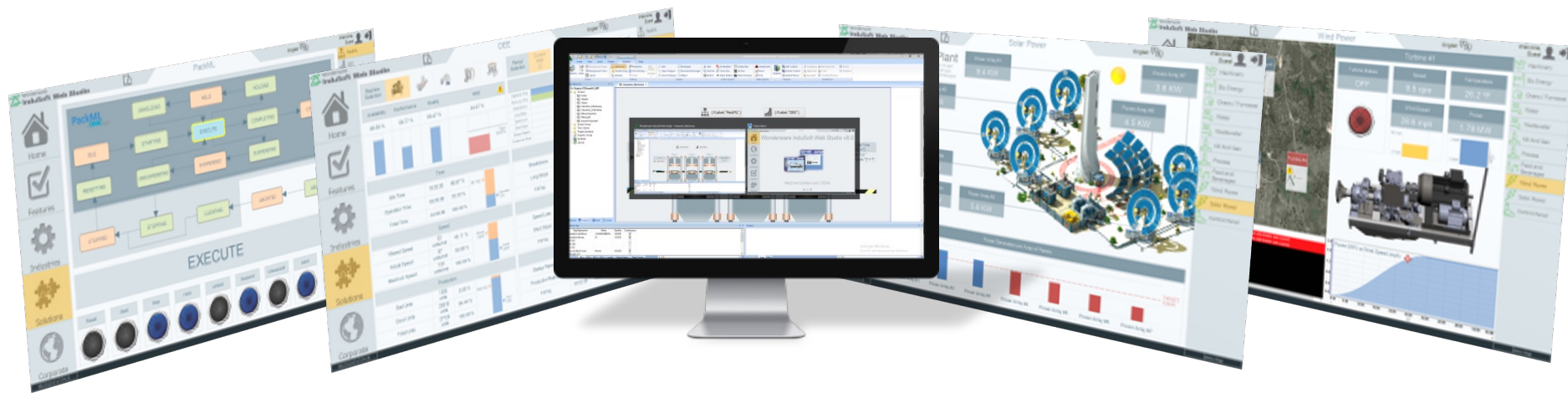


Value Proposition

Easy, simple, and powerful



AVEVA Edge is an easy-to-use, powerful, and affordable HMI/SCADA software and IoT/Industry 4.0 solutions for PCs, industrial panels, embedded & mobile devices



Develop your project once → Deploy and run it anywhere

Linux, Windows Embedded, Windows Desktop and Server Editions.

Investment Protection and greater ROI

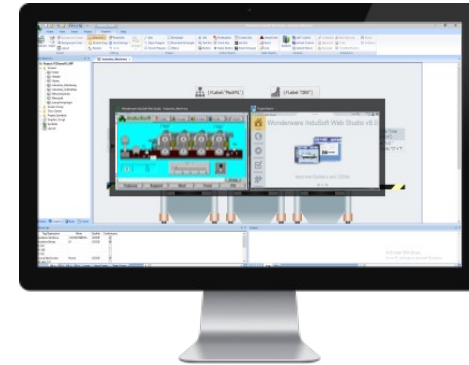
100% Compatibility with applications designed in previous versions



1997
AVEVA Edge 1.0
Windows NT
Windows 95
Windows CE



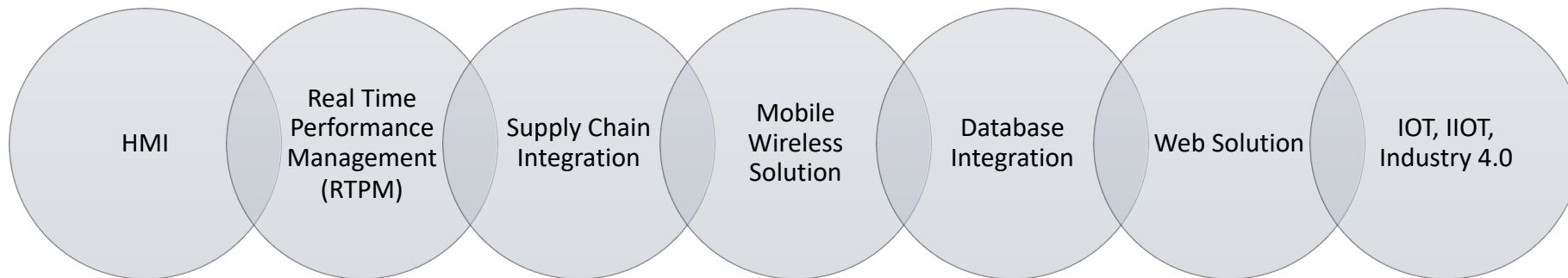
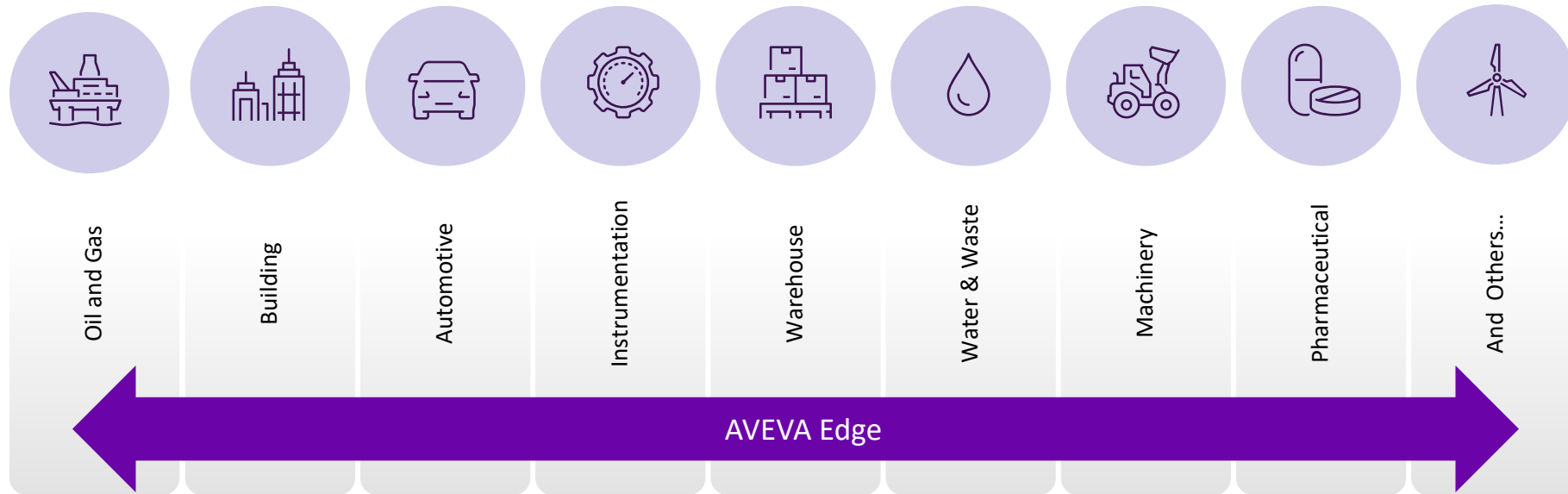
**Evolve protecting
your investment!**



2024
AVEVA Edge 2023 R2
Windows 10/11
Windows Server 2019 / 2016/2022
Windows 10 IoT Enterprise (LTSC/LTSB)/
Windows 11 IoT Enterprise
Linux

Vertical Markets

Any vertical market, any application



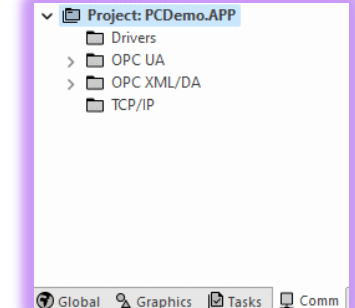
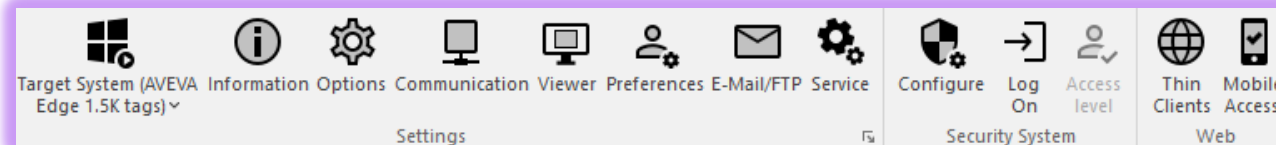
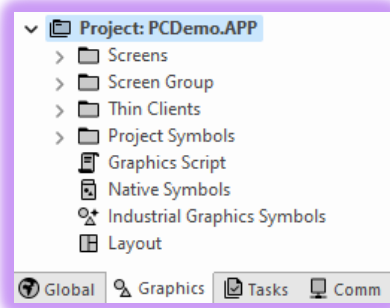
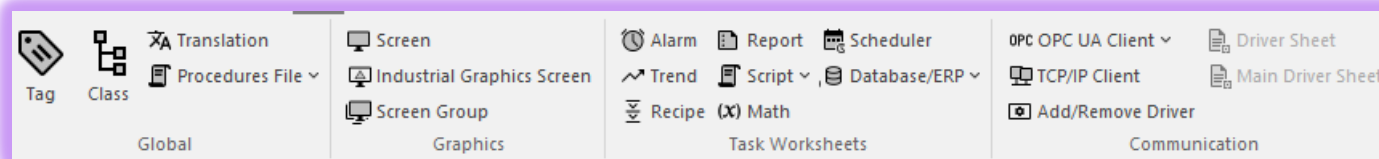
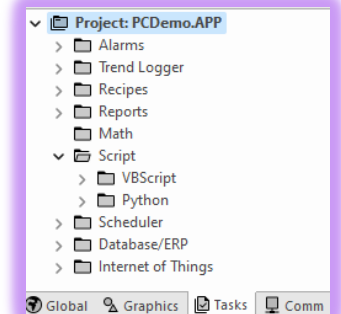
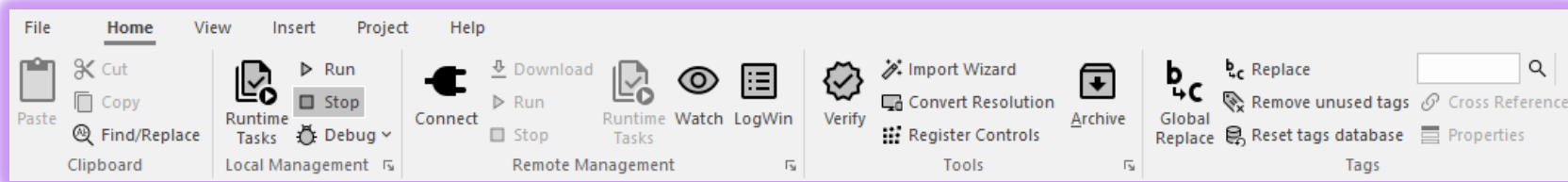
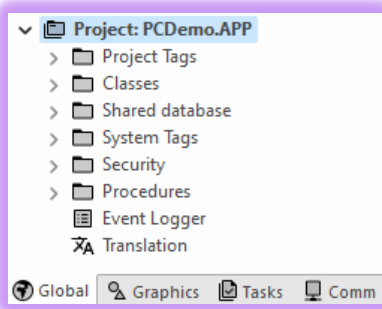
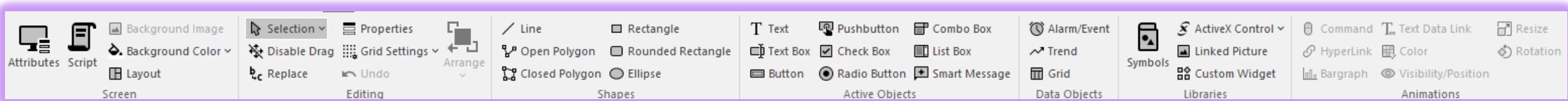
AVEVA EDGE

Main Features and Competitive Advantages

AVEVA

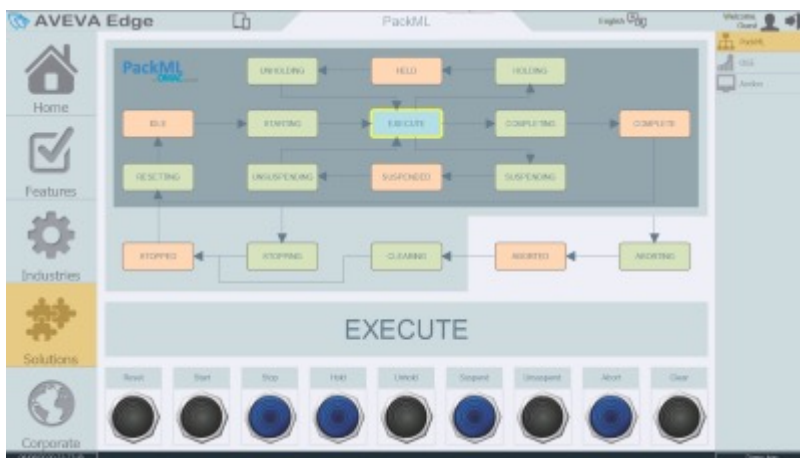
Native tools for SCADA, HMI, and IoT solutions

Comprehensive (everything included), mature, innovated and fully integrated



Solution in Layers

OEM-focused template-driven solution



Customization
(User, Project,
Development Specific)

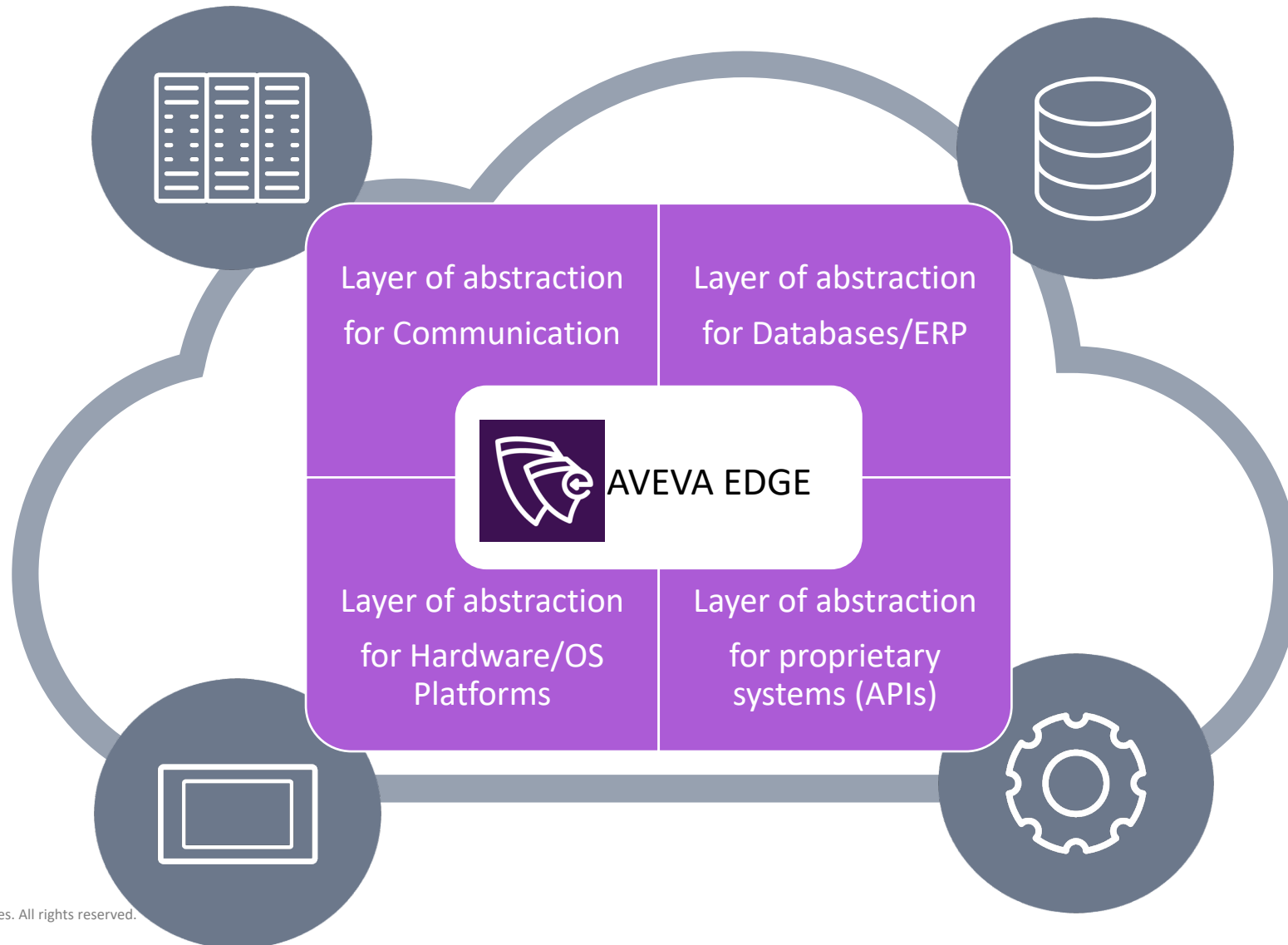
Template
(Industry Specific)
Data Center Template

Product
(General Market)
AVEVA Edge

- Leverage unique capability that drastically reduces the engineering cost for multiple deployments.
- Design asset-agnostic and site-agnostic templates.
- Provide flexibility to customize templates during the runtime (on-the-fly).

Modular Architecture

Flexibility



Portability

Develop once, deploy anywhere

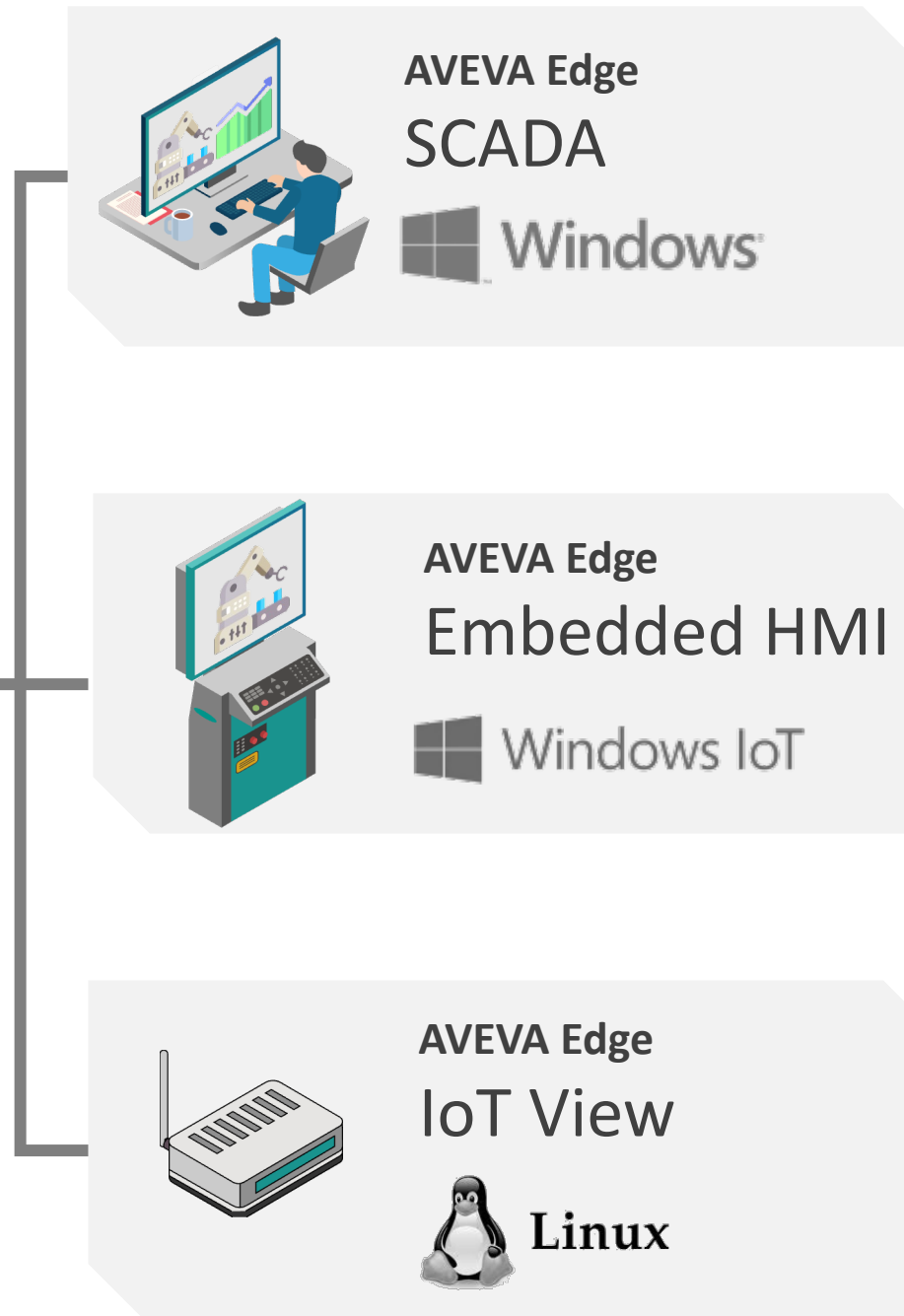
DEVELOPMENT (IDE)

AVEVA Edge
STUDIO



Windows

- Scalable in **functionality**
- Scalable in **footprint** (support for embedded devices)
- Scalable in **platforms** (hardware-agnostic)



RUNTIME EDITIONS

Mobility

Native Thin Clients

- **Secure:** Native secure connection with built-in encryption and authentication
- **Portable:** Access information for PCs, Tablets, Smart Phones, and wearable devices
- **Flexible:** Consume information from Web Browsers or dedicated Apps (AVEVA Mobile Access)
- **Customizable:** Custom user interface for each persona, based on their roles (lenses)
- **Scalable:** Auto screen scaling for different screen sizes and orientations
- **Interoperable:** Connectivity directly to Edge devices (e.g.: intranet Wi-Fi - LAN) as well as to the cloud-based system (internet - WAN)

Mobile Access Thin Client



- Plug-in free
- HTML5 interface
- Platform agnostic
- Multi-use devices

Secure Viewer Thin Client




- Ability to prevent operator from closing or switching from the application.
- Dedicated devices (runtime-line user experience)



Interoperability

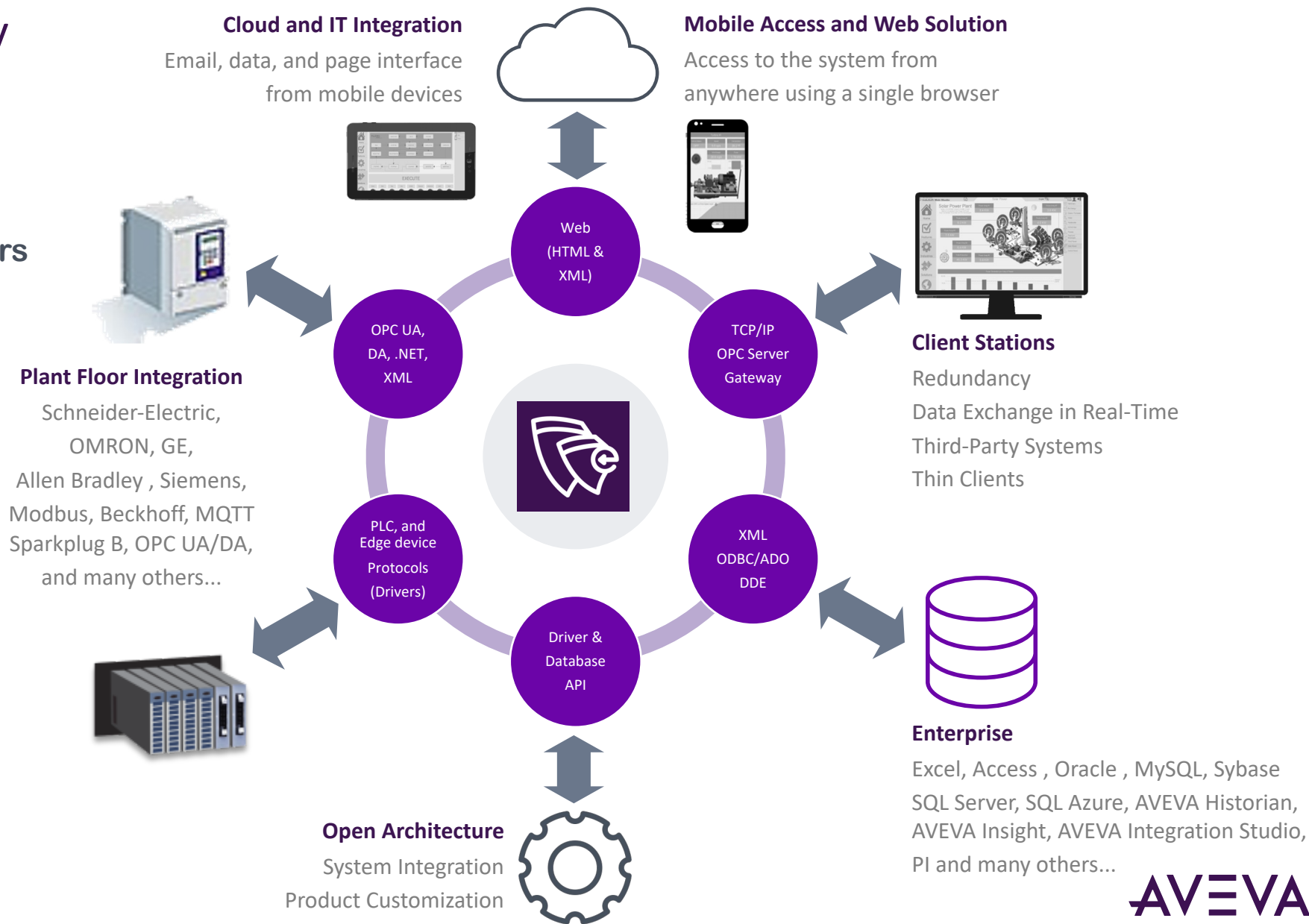
OT+IT native integration

 **Native built-in drivers (connectors) for all major protocols**

 **HTTP/HTTPS REST**

 **MQTT**.ORG

 **OPC UA**



Unique, state of art Database Integration

Patented solution

- Easy configuration, not requiring scripts
- Native integration with:
 - AVEVA Historian on premises
 - AVEVA Insight on the cloud
 - Any SQL Relational Database
- Native:
 - Store-and-forward configuration
 - Redundant configuration
 - Historization of Process Data (Trend), Alarm notifications, and Process Events
- Support for third-party providers OLE-DB, ADO.NET, ADO, and ODBC

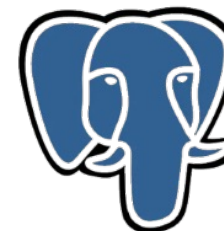
CONNECT

AVEVA™ Insight



Microsoft®
SQL Server®

ORACLE®

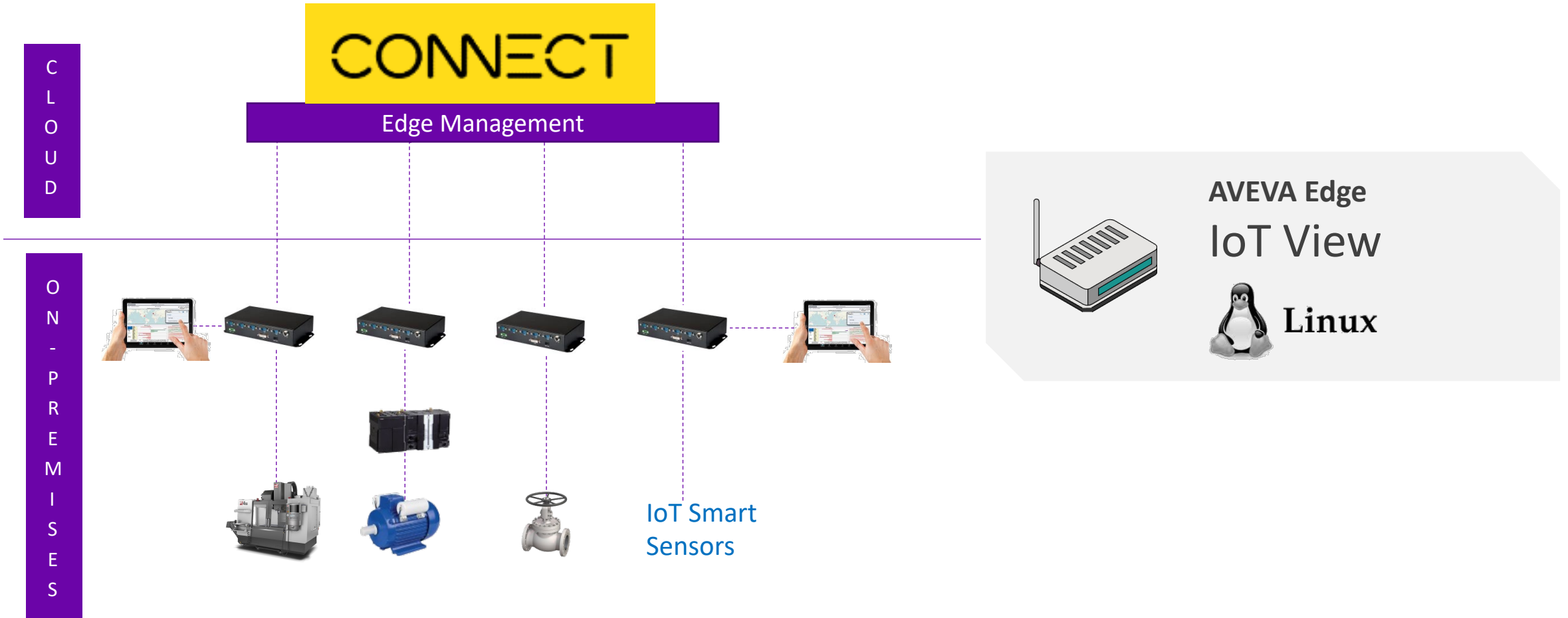


PostgreSQL

AVEVA

AVEVA Edge Management

Cloud-based edge management platform for provisioning of containerized solutions



*Available with AVEVA Flex Subscription

Native Integration with System Platform

Edge to Enterprise solution made easy

Unified Operation Center (UOC)
Control Room



On Premise
Asset Level



- Seamless integrated development environment
- Support for Industrial Graphics and Galaxy Repository
- Automatic point mapping
- Event-driven communication (VTQ)
- Synchronized Alarm Status
- Native support for AVEVA Historian
- Remote Management and Deployment
- Native ITMEViewApp object for System Platform, MQTT Sparkplug B and/or OPC UA integration options

Import Wizards

Reduces drastically engineering cost to modernize projects with AVEVA Edge

Rockwell®
FactoryTalk™ ME/SE



Rockwell®
PanelBuilder32



EATON®
PanelMate



Cost-effective method to modernize
leveraging past engineering
investments

AVEVA EDGE

Licensing

Licensing - Flexible, simple, affordable



License Levels

AVEVA Edge UNLIMITED

AVEVA Edge 512K tags

AVEVA Edge 100K tags (AEL)

AVEVA Edge 64K tags

AVEVA Edge 32K tags

AVEVA Edge 16K tags

AVEVA Edge 10K tags (AEL)

AVEVA Edge 4K tags

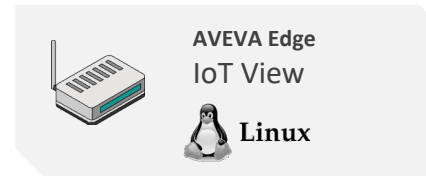
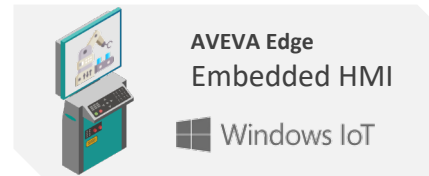
AVEVA Edge 2.5K tags (AEL)

AVEVA Edge 1.5K tags

AVEVA Edge 1.0K tags (AEL)

AVEVA Edge 300 tags

AVEVA Edge 150 tags



License Levels

AVEVA Edge UNLIMITED (*)

AVEVA Edge 4K tags

AVEVA Edge 1.5K tags

AVEVA Edge 300 tags

AVEVA Edge 150 tags

- All features available in any license (i.e.: license does not restrict features)
- Any license supports at least one concurrent Thin Client. Additional Thin Clients available for purchased individually
- UNLIMITED versions provide unlimited tags and unlimited Thin Clients (limited by physical constraints)

AVEVA EDGE

Key takeaways

Key Takeaways

Your success is our success

COMPREHENSIVE AND EASY TO USE

Mature, robust, reliable solution with native interfaces and tools to provide a high level of productivity

FLEXIBLE AND OPEN


Native Portfolio Integration and support to standards and extensibility for 3rd-party system integration.


SUSTAINABLE AND AFFORDABLE

Continuously evolving with flexible commercial models that suit your needs (CAPEX or OPEX).

This presentation may include predictions, estimates, intentions, beliefs and other statements that are or may be construed as being forward-looking. While these forward-looking statements represent our current judgment on what the future holds, they are subject to risks and uncertainties that could result in actual outcomes differing materially from those projected in these statements. No statement contained herein constitutes a commitment by AVEVA to perform any particular action or to deliver any particular product or product features. Readers are cautioned not to place undue reliance on these forward-looking statements, which reflect our opinions only as of the date of this presentation.

The Company shall not be obliged to disclose any revision to these forward-looking statements to reflect events or circumstances occurring after the date on which they are made or to reflect the occurrence of future events.

 [linkedin.com/company/aveva](https://www.linkedin.com/company/aveva)

 [@avevagroup](https://twitter.com/avevagroup)

ABOUT AVEVA

AVEVA is a global leader in engineering and industrial software driving digital transformation across the entire asset and operational life cycle of capital-intensive industries.

The company's engineering, planning and operations, asset performance, and monitoring and control solutions deliver proven results to over 16,000 customers across the globe. Its customers are supported by the largest industrial software ecosystem, including 4,200 partners and 5,700 certified developers. AVEVA is headquartered in Cambridge, UK, with over 4,400 employees at 80 locations in over 40 countries.

[aveva.com](https://www.aveva.com)