

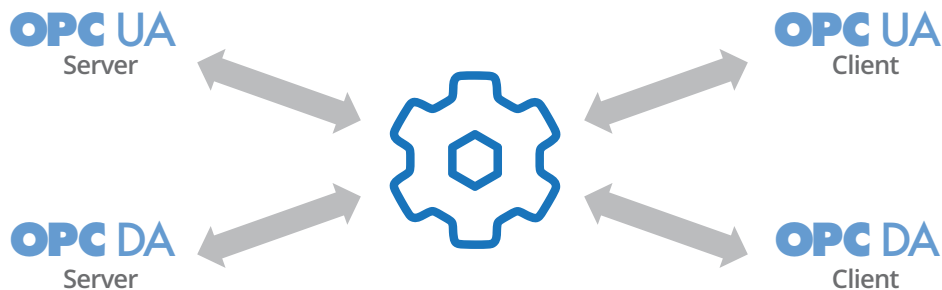


DataHub® OPC Gateway™

OPC UA/DA conversion

Connect OPC UA systems to OPC DA (Classic) systems

Do you want to start using OPC UA today? Now you can seamlessly link your current system to the future with DataHub OPC Gateway software, and convert real-time, streaming OPC DA data to UA or vice-versa. Using the OPC Gateway feature, you can connect any OPC DA server or client to any OPC UA server or client, locally or over the plant network.



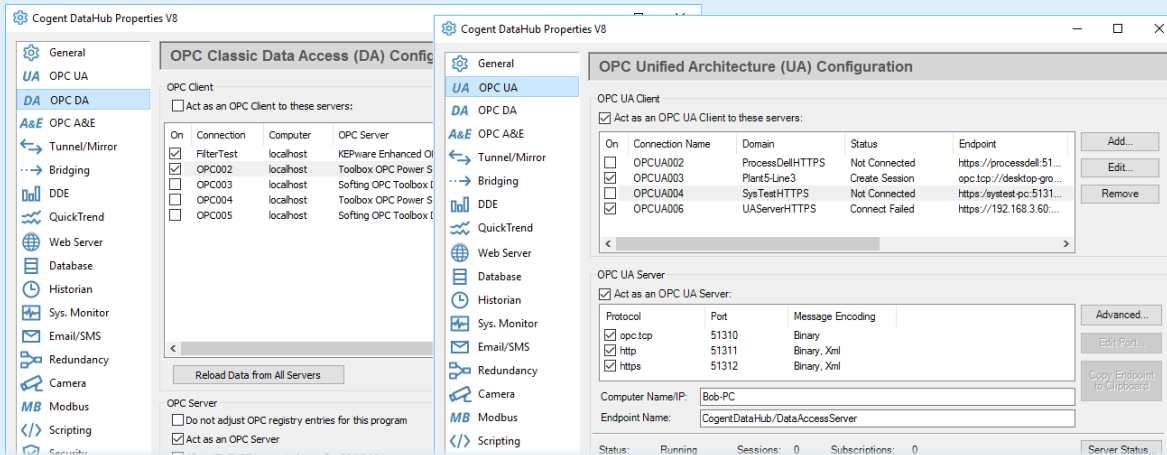
A Full-Featured Gateway

DataHub OPC Gateway software provides valuable features that few others do, such as:

- **Automatic discovery** – No need to select all the points to read from the server, just let DataHub® middleware browse the whole data set. Changes to the data set on the next run are auto-updated.
- **Maintains UA data model** – The data model stays intact, unlike with other UA/DA gateways. The full data hierarchy from the OPC UA server gets faithfully represented in the OPC DA client.
- **Low latency** – Eliminates cache latency and stale data, so you always know the data quality and have the most current value. A multi-threaded interface means that a slower non-responsive server will not slow down other connections.
- **Interactive Scripting** – Manipulate your data in real time with a fully integrated, dynamically interpreted programming language. You can break up arrays, convert data types, adjust polling rates, create monitoring points, track connections, read in lists of OPC tags, automatically calculate formulas based on data points, and much more.

Integrate all data into a single, unified set

Bring data from all sources and any protocol, into a single, unified data set. Any selected subset of this aggregated data can be accessed by clients using a supported protocol: OPC UA, OPC Classic, Modbus TCP, MQTT, MQTT Sparkplug B, ODBC, DDE, TCP, HTTP and more.



Standard Features

- **OPC DA support** – connect OPC DA servers and clients
- **OPC UA support** – connect OPC UA servers and clients
- **Data aggregation** – merge data from multiple sources into a common data set
- **QuickTrend** – view live, real-time trends for selected data
- **Scripting** – run calculations on your live data and manipulate it in real time
- **Security** – control access and set permissions for users and groups

Popular Add-on Features

- **Tunnel/Mirror** – secure networking of OPC data without DCOM problems
- **Data bridging** – connect two or more data sources to share data in real time
- **OPC A&E** – connect to OPC A&E servers and clients
- **OPC A&C** – connect to OPC UA A&C servers/clients
- **MQTT Broker** – connect MQTT clients

Ordering Information

PRODUCT

DataHub OPC Gateway

CODE

DHGAT

DESCRIPTION

DataHub Core features with OPC DA and OPC UA

System information

DataHub® middleware supports OPC UA (server and client), OPC UA A&C (server and client), OPC UA HDA (server), OPC Classic (DA 3, DA 2, and A&E), as well as Modbus TCP, MQTT, MQTT Sparkplug B, ODBC, DDE, TCP, HTTP and more. It runs on the following systems:

- Windows Server 2022 / 2019 / 2016
- Windows Server 2012 & R2
- Windows Server 2008 & R2
- Windows Server 2003 & R2 (DataHub v8 only)
- Windows 11 / 10 / 8.1 / 7
- Windows XP SP2 (DataHub v8 only)

About Skkynet

Skkynet is a global leader in real-time middleware products and services that allow companies to securely acquire, monitor, control, visualize, network and consolidate live process data in-plant or in the cloud. DataHub®, Skkynet DataHub in Azure, and Embedded Toolkit (ETK) software enable secure, real-time data connectivity for industrial automation, Industrial IoT, and Industrie 4.0.

Skkynet®, DataHub®, SkkyHub™, OPC Gateway™, the Skkynet and DataHub logos are either registered trademarks or trademarks used under license by the Skkynet group of companies ("Skkynet"). All other trademarks, service marks, trade names, product names and logos are the property of their respective owners.