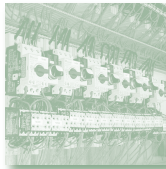




G&O AUTOMATISIERUNGSGESELLSCHAFT MBH





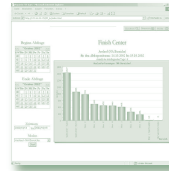
...our work for you

Your project has been approved. During the start-up phase, the **G&O Team** first meets with all those responsible and together we go over your proposal in detail. We then coordinate the project within a dependable, yet flexible process by pulling together all loose threads into a tightly-woven concept. We are experienced in planning and coordinating projects in diverse industries.

know-how

About us...

For years, our core competence has remained concentrated in the development and implementation of automation systems for industrial processes. Our team has grown to 30 highly-qualified associates with proven experience, commitment and flexibility. Transparency in project planning and design is based on establishing excellent communication links with our customers and is an essential element of our company culture. Through intense cooperation established with other specialists in process construction and operations, not to forget logistics experts, we are in a very strong position to realize even the most complex system solutions.



Project Work

From robust hardware concepts to innovative software modules, we integrate the required project components. Our services are all »under one roof«, and when needed, contact to additional specialists is immediately made.

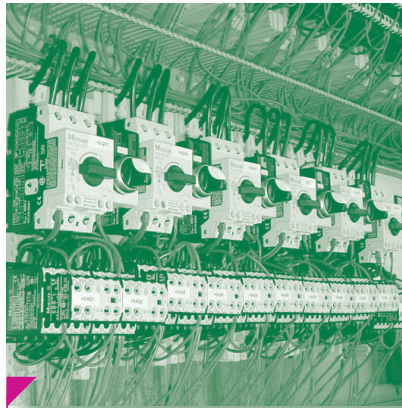
We are seasoned professionals working in various **G&O** competence teams and able to smoothly integrate our leadership into teams from other companies on extensive projects.

...knowledge

Innovative projects requested by the industry both challenge and stimulate our team. You as customer will profit most from the continuous learning instilled in our associates. Our advice to you is founded on recent developments in technology as well as current industry standards. With our knowledge you will realize your projects with technology geared towards the future at a price you can afford.

...planning

Our CAD Department creates all the necessary plans and drawings by working closely together with our project managers. The dovetail links and close proximity to our workshop are decisive factors in keeping our timings and ensuring project success.



Assembly & Installation

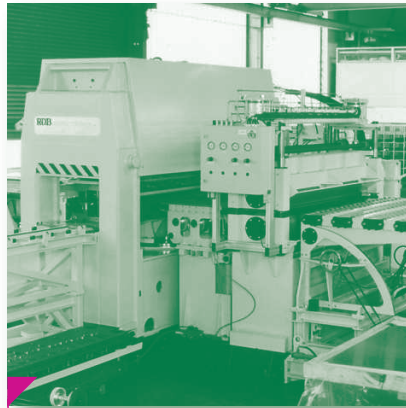
Assembly and Installation require special skills, **know-how** and precise working habits. Either based on your specific requirements, or from working hand in hand through the project, we can assemble the most up-to-date switchboards and control panels being used for automation systems by the industry right in our own workshop.

Our main service to the industry for line assembly is centered around the special requirements needed in material processing and conveying technology. We install sensors and actuators on all types of machines or complete lines, and install the needed BUS systems based on your requirements or system solutions resulting from our input.

The range of our assembly service extends from installing a nine channel plug to connecting the main power supply.

...apprentices

Our motivated and qualified young talents are being trained and developed in our own company. This is how we instill the high level of performance and quality standards we expect in order to form a long term commitment to our company culture.



Controls & Drives

Nearly every project involving process technology has at least one element requiring unique solutions:

Connecting the new steering system to existing infrastructure, additional programming of software, process optimization, e.g. regulating temperature or product in-feed.

Working from the perspective of first gaining a cohesive process integration enables our team to access and adjust key parameters in order to optimize results.

We are specialists in modular approaches and in the best position to quickly make your systems more efficient, and when necessary, work effectively during on-going production.

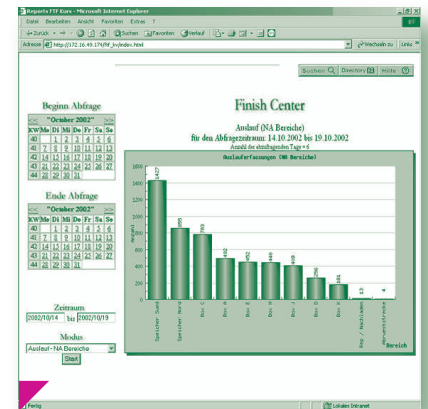
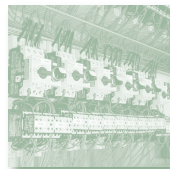
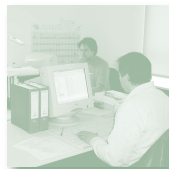
On machines with diverse product requirements we can adapt the drive, e.g. use servo drives to match the load. This ensures shorter changeovers, more flexibility and a machine able to adapt quickly at the push of a button.

...adaptation

Where is what utilized best? What really is the optimal hardware for each job? Our many years of experience in filling, packaging, and conveying systems helps us find the best answers to these often difficult questions.

flexi

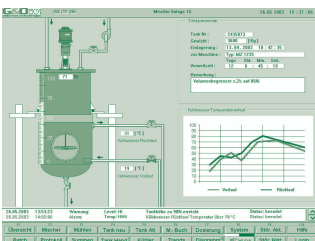
efficient



Visualization

Visualization systems are supported by databases and software that enable a clear and targeted »picture« to evaluate the efficiency and status of a running system with the advantage of showing immediate errors or weaknesses. The captured data is processed for further handling by a technical-based Intranet. We can deliver company-wide visualization operations using all relevant production data in order for you to have a solid foundation for effective information management.

...observation

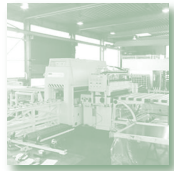


We make it possible for you to see your key production processes. You can observe exactly what the machine is doing and react accordingly.

...operation

We develop modules for monitoring and operating diverse machines and ongoing processes. Our concept takes into consideration all ergonomic factors for the operator, as well as a clear, logical concept that is user-friendly.

innovative



Training

The project is ready to go live and the **G&O** Team has been diligently working side by side with your people. A success for both of us is that the system runs at optimum performance from the very start. We are prepared to carry out any training needs you may identify for your team. We consider this to be an integral part of all professional project work. Specially prepared seminars, intensive operator assistance on location, or an early integration of your people in our project team are all possible to ensure the most efficient implementation of a project.

...challenge us!

G&O AUTOMATISIERUNGSGESELLSCHAFT MBH
BORSTELER CHAUSSEE 112 . D-27283 VERDEN GERMANY
TEL: +49 42 31 · 96 49 - 0 . FAX: +49 42 31 · 96 49 -10
email: info@gundo.de . www.gundo.de

